

Waste Stream Challenges

A Presentation on Mattress Recycling

April 13, 2026



ESTABLISHED 1975



Today's Agenda:

- Who Casella is, where we came from, and how this history defines who we are today.
- Quantifying the problem: we can't fix what we don't know.
- Why should we recycle mattresses?
- Understanding and articulating the value to different stakeholders.
- How can our public policy be used to further the recovery of this material?
- What's next in Maine



Who We Are

HQ: Rutland, Vermont

Founded: 1975

Employees: 5,500+

Facilities: 200

Customers: 1,800,000+

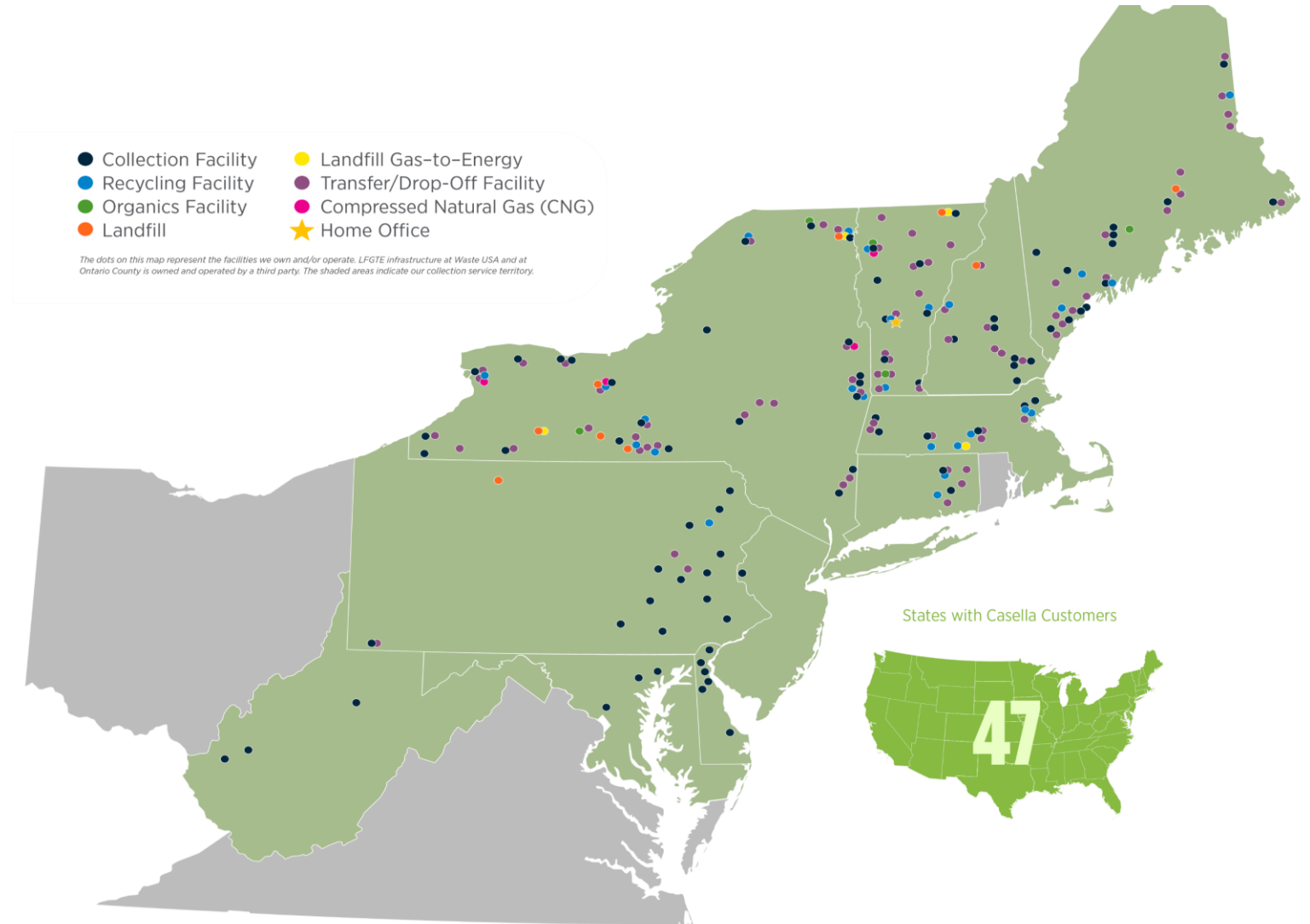
Annual Tons Processed:

1,000,000+ tons of recyclables

~400,000+ tons of organics

Annual Hours Volunteered: 14,000+

Mission: To create value by renewing and sustaining our resources and our environment.



ESTABLISHED 1975

RECYCLING • SOLUTIONS • ORGANICS • COLLECTION • ENERGY • LANDFILLS

casella.com • 3

Investing in Sustainability *Since 1975*



MATERIALS MANAGEMENT: We recycle nearly 1.5 million tons of recyclables and organics per year. Our disposal facilities recover enough landfill biogas to power nearly 30,000 homes. We are focused on innovation around hard-to-recycle items such as **mattresses**, industrial scrap, and a range of **consumer products and packaging** that cannot be processed in conventional recycling facilities. We also advance these goals by building partnerships throughout the value chain.



INNOVATION: We continue to make progress on our innovation pilots. Examples include our Electric Vehicle pilot in Vermont testing EV viability within our collection fleet, and our engagement with Waga Energy to develop renewable natural gas (RNG) production facilities at three of our landfills. Casella has a track record of working with our higher education partners on award-winning research to help pioneer the future of our business and industry while providing essential, real-world experience for the next generation of leaders.



CIRCULARITY WITH BECTON DICKINSON: Becton Dickinson and Casella have partnered in a next-generation recycling pilot to manage discarded syringes and needles that has led to 40,000 pounds of medical waste to be recycled and diverted from disposal. We have partnered with leading research institutions to build, test and validate our work and expect these partnerships to continue to flourish throughout the program's development.

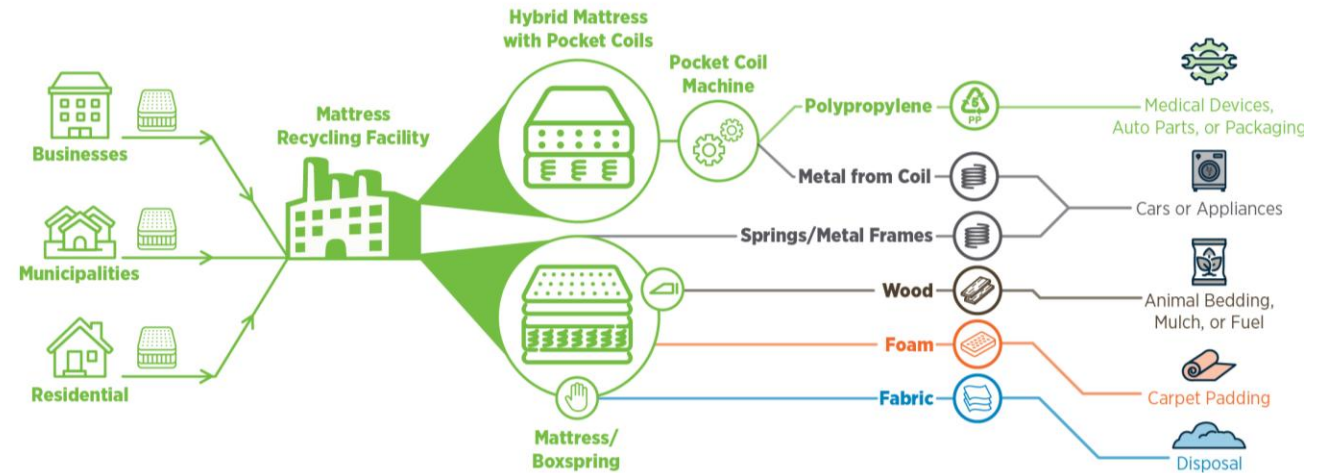
How Big of a Problem are Mattresses?

What is the volume of mattress waste?

- Each year, residentially generated volume equates to about 4% of the population
- Each year, commercially generated volume equates to another 2-4% of the population
- This means Maine, with a population of ~1.3M, is generating ~50-100,000 mattresses each year

How much of the mattress is recyclable?

- ~ 80% of the material in a mattress is recyclable
- Mattresses are comprised of wood, metal, foam, shoddy and textile components



MANUAL SEPARATION
The external fabric is cut and removed from the mattress by hand.

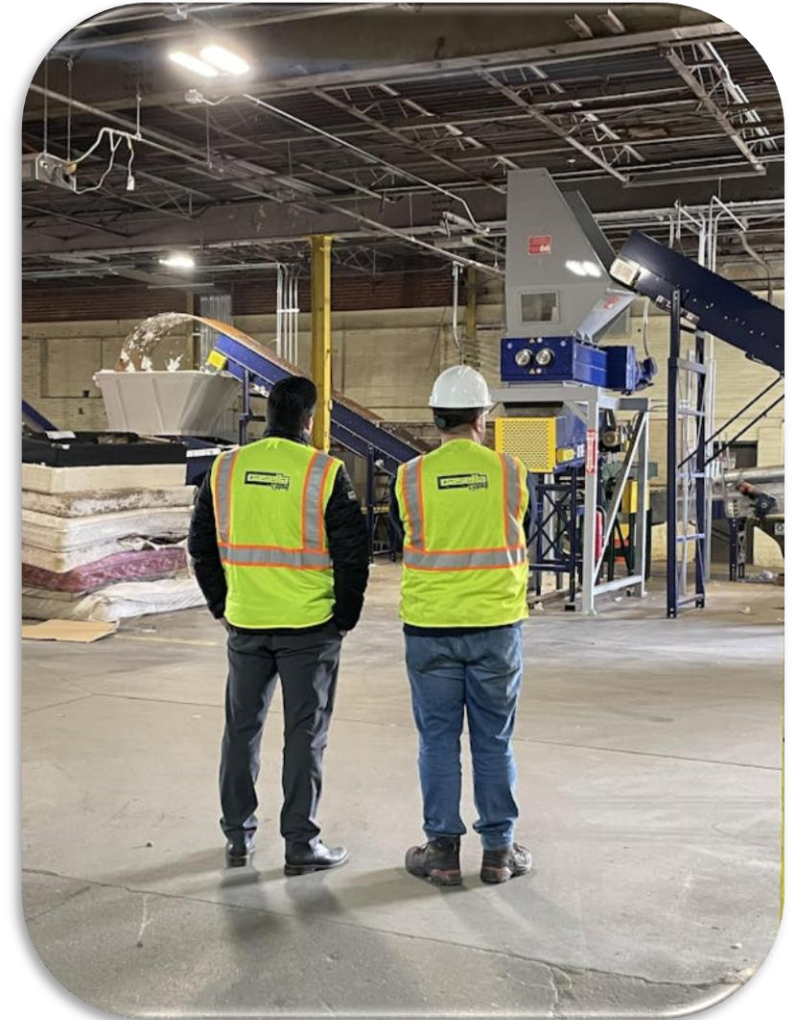
TABLE SHEAR
A custom piece of equipment strips the staples and nails from box springs efficiently and safely removing the metal from the wood.

POCKET COIL MACHINE
A specialized shredding system separates the metal coil from its foam wrapping, or pocket, so both materials can be recycled.

Why Recycle Mattresses?

Why should we remove them from disposal?

- Each unit takes up almost a yard of airspace in landfills
- Mattresses create operational challenges at transfer stations and disposal sites
- Metal springs cause issues at waste-to-energy facilities
- There are major environmental benefits
 - We can divert up to 2000 tons from disposal in Maine
 - Reduce 6,310 tons (MTCO₂e) of greenhouse gas emissions which is equivalent ~6300k passenger vehicles off the road or 5258 acres of forest carbon sequestration



What is the value and how is it articulated?

Using our **Environmental and Economic Benefit Calculator** we can effectively communicate to customers the results that are most relevant to them:

- Landfill Operators : Air Space
- Transfer Stations : Load Factor
- Environmental and Sustainability: Greenhouse Gas reduction net of transportation delta and disposal method.

Environmental and Economic Benefit Calculator Mattress Recycling with Casella

Customer name
Any Town

Enter the population of your municipality
Population

If known, enter the number of mattresses your municipality manages
Number of mattresses (optional) 15,000 units

Select your current disposal option for mattresses
Current Disposal Landfill

Disposal and recycling facilities
Distance to disposal 71 miles
Distance to mattress recycling 13 miles
Current disposal tip rate \$75.00 per ton

Disposal details (if you own or host the landfill)
Landfill revenue per ton per ton
Landfill compaction rate lbs per yard

MSW transportation details
MSW tons shipped per year tons per year
Permitted load factor tons per load
Current load factor tons per load
Transportation cost per ton per ton

To learn more about mattress recycling at Casella, visit:
casella.com/services/recycling/mattress-recycling/



Estimated Environmental Benefits

Mattress recycling returns resources to new products and conserves disposal capacity

- 15,000 Mattress units recycled
- 300 Tons of disposal avoided
- 15,000 Cubic yards of landfill airspace conserved
- 975 Tons of GHG emissions avoided (MTCO_{2e})

Equivalent to...


- 946 Passenger vehicles off the road, or
- 789 Acres of forest carbon sequestration

Estimated Economic & Financial Benefits


The financial benefits of mattress recycling can extend far beyond avoided tip fees.

- \$28,125 Disposal cost savings
- \$0 Conserved airspace value (landfill revenue)
- \$0 Load factor savings for MSW transportation


\$28,125 Total potential value



15,000
Mattress
Units Recycled



975
Tons of GHG
Emissions Avoided



\$28,125
Total
Potential Value



Opportunities for Public Policy

Mattresses are difficult-to-handle materials, and we have seen states successfully implement waste bans or Extended Producer Responsibility (EPR) to support the development of a recycling model, and conserve valuable disposal capacity.

Expected outcomes of either type of legislation may include:

- Progress on State specific solid waste management plans
- Recovery of valuable commodities for recycling
- Job creation
- GHG reduction
- Conserving landfill capacity for future generations

What's next: All Hands-on Deck!



- Mattress Recycling operations located in Willimantic, CT and Buffalo, NY processing over 280,000 mattress units each year
- We received a Maine DEP permit for mattress recycling in Scarborough in March of this year
- We have established a network of aggregation points in Maine at most of our transfer stations
- Set up programs for large generators such as Town of Kittery and Portland Mattress Makers
- We need approximately 20,000 more units to launch our new facility and will be actively looking for volume through municipalities, large generators and 3rd party haulers/transfer station

Questions?

Thank you!

Trevor Mance
Sr. Business Development Manager
trevor.mance@casella.com



ESTABLISHED 1975

RECYCLING • SOLUTIONS • ORGANICS • COLLECTION • ENERGY • LANDFILLS

To learn more, please visit casella.com