

Drive-thru Transfer Station

Inside the effort to design a safe and efficient facility built for the next 40 years

What prompted this?

Two catalysts for change

Aging infrastructure
and equipment

A tragic accident

Task Force Assembled

- Address immediate safety issues
- Develop plan for long-term solution

REPORT OF THE SOLID WASTE & RECYCLING LONG RANGE PLANNING COMMITTEE

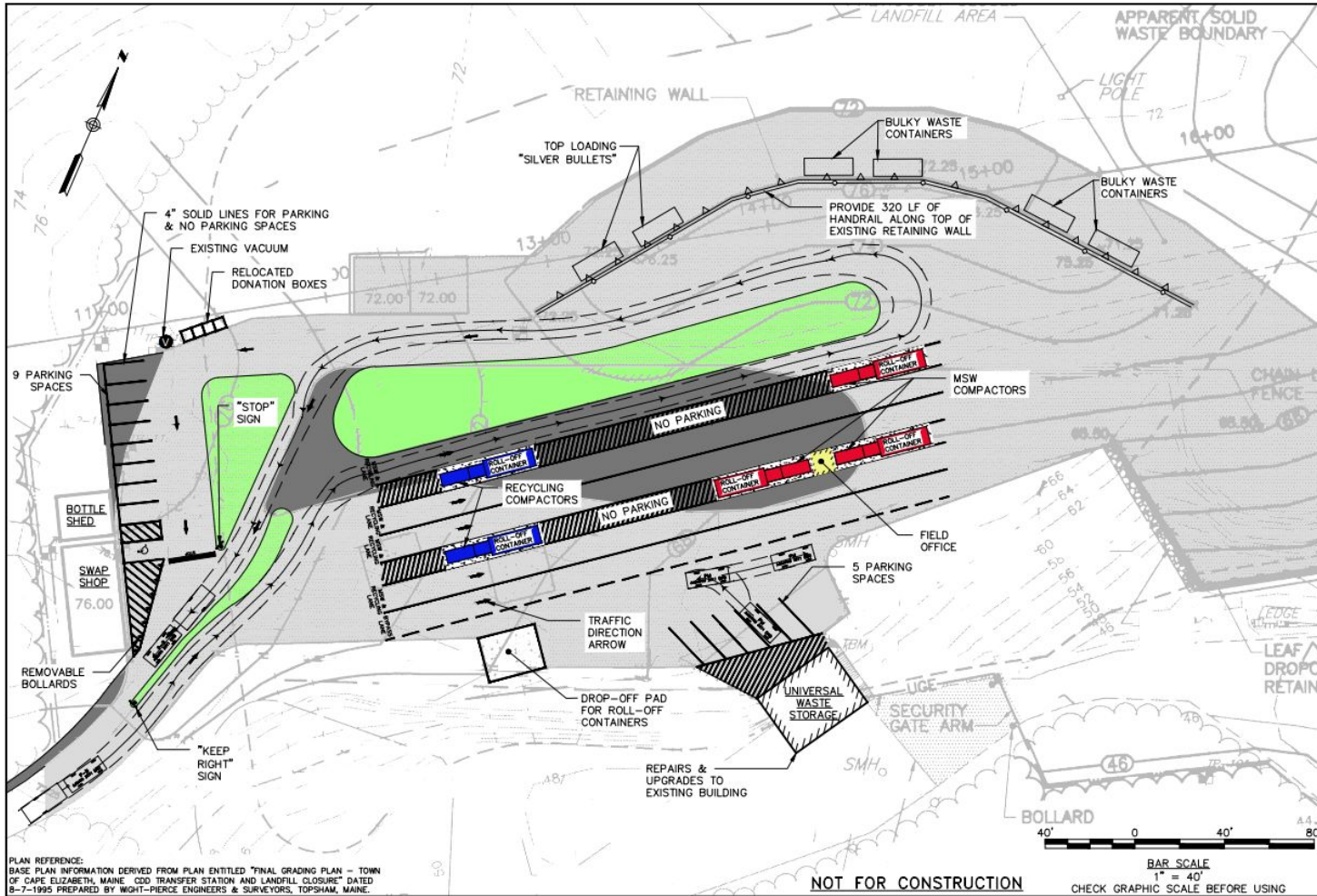


AUGUST 31, 2015

Criteria

In every option and plan considered by the Committee, pedestrian and vehicular traffic movements, as well as the safety of users and employees, were primary concerns.

Solution



PLAN REFERENCE:
 BASE PLAN INFORMATION DERIVED FROM PLAN ENTITLED "FINAL GRADING PLAN - TOWN OF CAPE ELIZABETH, MAINE CDD TRANSFER STATION AND LANDFILL CLOSURE" DATED 8-7-1995 PREPARED BY WIGHT-PIERCE ENGINEERS & SURVEYORS, TOPSHAM, MAINE.

NOT FOR CONSTRUCTION

41 Hethcote Drive Cape Elizabeth, ME 05623 WWW.WOODARDSCURRIAN.COM WOODARD & SCURRIAN CONFIDENTIAL & INTEGRITY DRIVE RESULTS	
RECOMMENDED DESIGN	
DESIGNED BY: MGLM	CHECKED BY: RET
DRAWN BY: MGLM	228673 RECOMMENDED DESIGN
TOWN OF CAPE ELIZABETH, CAPE ELIZABETH, MAINE SOLID WASTE AND RECYCLING LONG RANGE PLANNING COMMITTEE	
JOB NO: 228673 DATE: AUGUST 2015 SCALE: 1" = 40' FIG 1	



